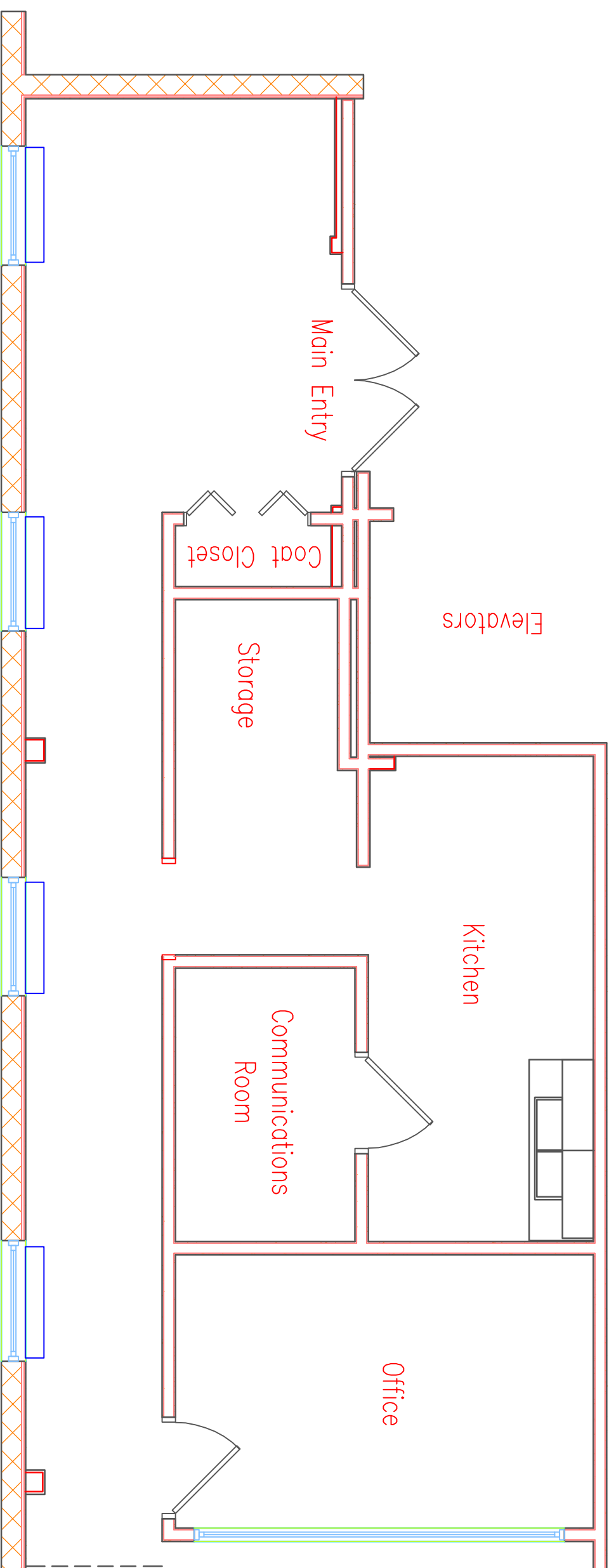


230 S. Bemiston Ave., Suite 1470, Clayton, MO



South Wall

| | |
|---------------|--------------------------------|
| Prepared by: | Preferred Commercial Solutions |
| | 923 Woods Mill Rd. |
| | Bollwin, MO 63011 |
| | 314 604-0755 |
| Prepared for: | The Michelson Organization |
| | (Robert M. Utton) |
| Scale: | 1/4"=1' |