



100 Eclipse Road  
Cary, NC 27511

1-866-235-7730

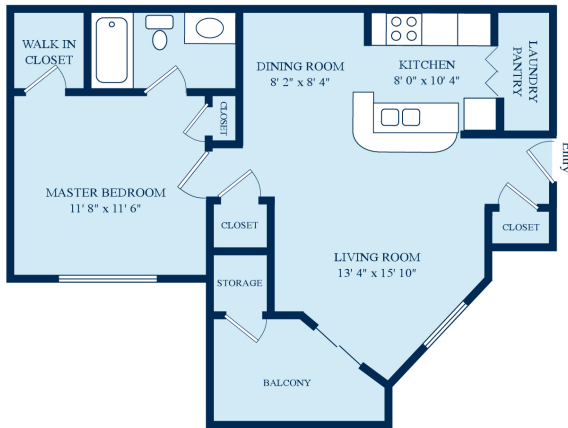
[amberwood@michelsonrealty.com](mailto:amberwood@michelsonrealty.com)

[www.amberwoodapts.com](http://www.amberwoodapts.com)

## THE Redbud

One Bedroom, One Bath  
Approximately 600 Square Feet

\*Suites may vary in features and dimensions based on floor and location.

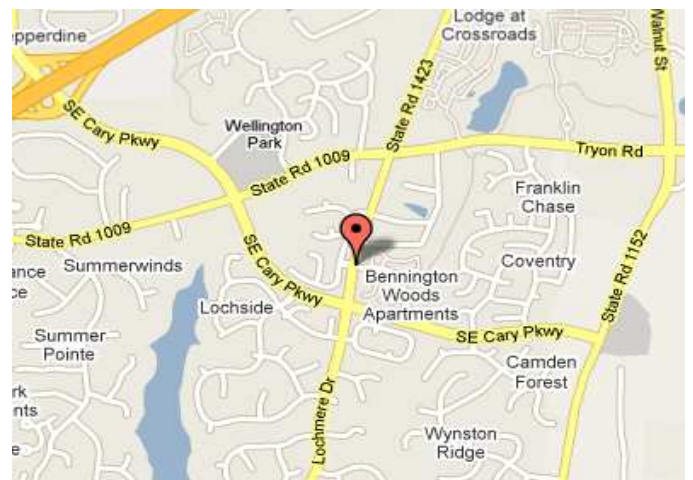


## Available Apartment Amenities

- Spacious Walk-in Closets
- Private Balconies and Patios
- Ceiling Fans
- Cozy Wood Burning Fireplaces
- Frost-Free Refrigerator
- Continuous Clean Ovens
- Garbage Disposals
- Dish Washers
- Crown Molding
- Brass Nickel Fixtures
- Granite Counter Tops

## Directions

Take 40 East to US1/64 south (exit 293). Take Cary Parkway exit. Turn left onto Cary Parkway. Go to the traffic light and turn left onto Lochmere Dr. Amberwood is the first street on the right.



## Office Hours

Monday: Friday 9am – 6pm

Saturday: 10am – 5pm

Sunday: 1pm – 5pm

