



Welcome Home to Southmoor!

Come enjoy the Dogwoods amidst the thirty acres of rolling wooded hills and beautifully landscaped grounds. Southmoor Apartments, located in the Mehville School District, where urban convenience and rural serenity meet in perfect harmony. We are centrally located to Highway 55, 44, 141 and 270, our location – just 2.5 miles south of I-270, off Tesson Ferry Road – is ideal for many who work in the South County area, Fenton, downtown or even Clayton.

Southmoor Apartments creates a better quality of life by offering quality apartment living and exceptional recreational amenities. The community offers recreational facilities where you can enjoy tennis, swimming, basketball, volleyball and our newly renovated 24-hour fitness center. The mutli-level atrium clubhouse features a resident business center, media room, 24-hour laundry care center, and wireless internet café with coffee bar. For the family, our community offers the convenience of an on-site daycare and playground.

Southmoor Apartments invites you to become part of our community and one of our neighbors. With the availability of six unique floor plans, we are certain to have a spacious design suitable to your specific needs. Each of our residents is provided with ample parking and a private entrance. The professional management and maintenance team takes pride in helping make your apartment home a pleasurable living experience. It is our goal at Southmoor Apartments to create the 'signature living' that you deserve.

Southmoor, where Quality and Service is our motto!





512 Golf Ridge
St. Louis, MO 63128

1-866-275-8586

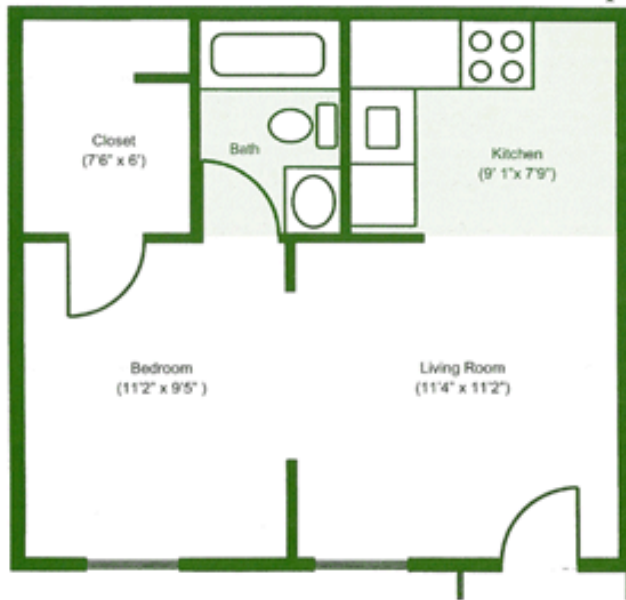
southmoor@michelsonrealty.com

www.southmoorapts.com

THE OPAL

1 Bedroom 1 Bath (Studio)

486 Square Feet



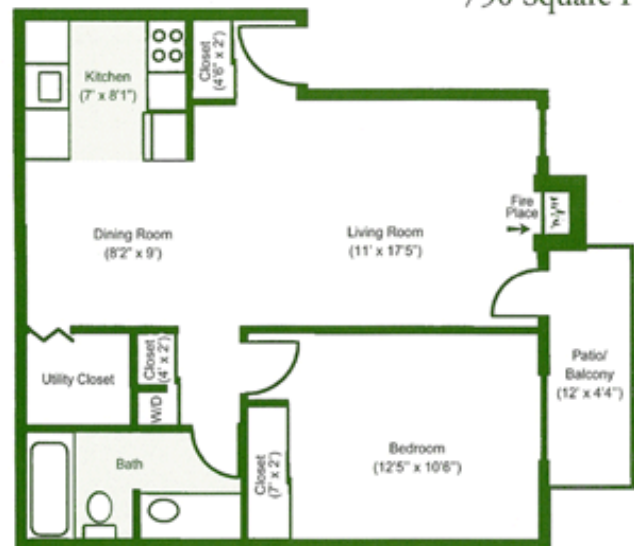
The Opal Floorplan is a compact and efficient home which makes this all-electric apartment ideal. The kitchen features a refrigerator, range, and garbage disposal. Heat and air conditioning are furnished by a quick-response wall unit. Individual ground level entries to each studio home guarantee convenient access from nearby parking. Come and see this incredible apartment for yourself.

The Pearl floorplan is a warm and comfortable, this one-bedroom apartment features a gas burning fireplace, gas heat, ceiling fan, and a French door to the patio or balcony. The kitchen and bath are neutral colors that lend themselves easily to any decor. All electric appliances include a frost-free refrigerator, range, garbage disposal and dishwasher. This apartment home is cable-ready. Spacious rooms and ample closet space complete this perfect apartment home. Schedule a Visit to our community today to see this floorplan.

THE PEARL

1 Bedroom 1 Bath Apartment

750 Square Feet





512 Golf Ridge
St. Louis, MO 63128

1-866-275-8586

southmoor@michelsonrealty.com

www.southmoorapts.com

THE SAPPHIRE

1 Bedroom 1 Bath Loft-Style Townhome

844 Square Feet



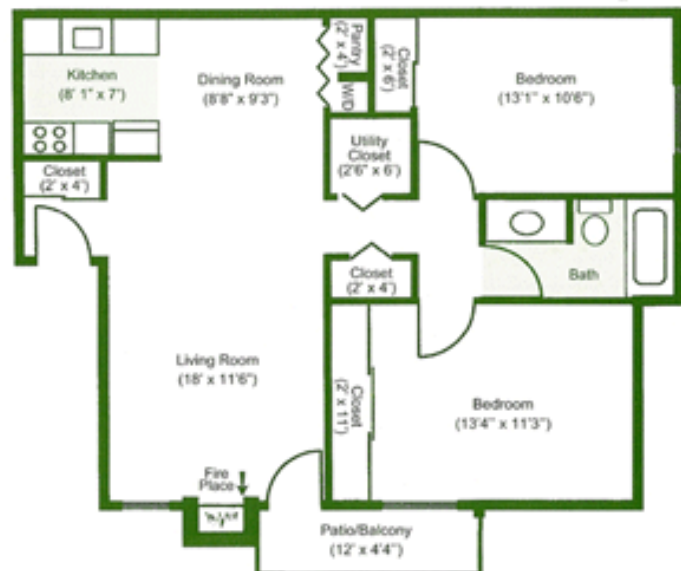
The Sapphire floorplan is airy and uniquely designed, this two-level, all electric apartment home has a perfect layout. The first floor features a dining room with a lighted ceiling fan and convenient kitchen with frost-free refrigerator, range, garbage-disposal, and dishwasher. The living room is cable-ready and contemporary vertical blinds complement the private balcony doors. The second floor of each townhome is a loft-style bedroom and adjacent bath. Ground level entries provide convenient access from nearby parking. Visit Southmoor Apartments today to see this floorplan in person.

The Ruby Floorplan is warm and inviting, this two-bedroom apartment features a gas burning fireplace, gas heat, ceiling fan, and French doors to a patio or balcony. the kitchen and bath are neutral colors that lend themselves easily to any decor. All electrical appliances include a frost-free refrigerator, range, garbage disposal, and dishwasher. This apartment home is cable-ready. Spacious rooms and ample closets are well suited for a family.

THE RUBY

2 Bedroom 1 Bath Apartment

921 Square Feet





512 Golf Ridge
St. Louis, MO 63128

1-866-275-8586

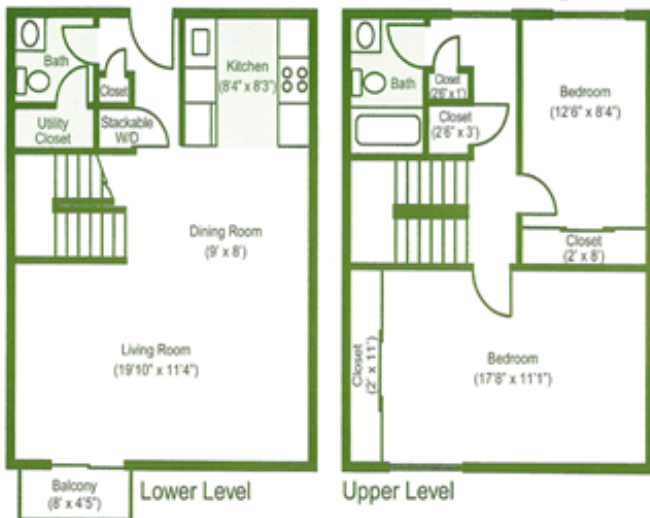
southmoor@michelsonrealty.com

www.southmoorapts.com

THE DIAMOND

2 Bedroom 1 1/2 Bath Townhome

1270 Square Feet



The Diamond floorplan is a spacious two-level townhome with one and a half baths. It is furnished with a stackable washer/dryer for your convenience. The first floor features a dining area with a lighted ceiling fan and convenient kitchen with a frost-free refrigerator, range, garbage disposal, and dishwasher. It is cable-ready both up and downstairs. Contemporary vertical blinds complement the private balcony doors. The kitchen and baths are neutral colors that lend themselves easily to any decor. Spacious rooms and ample closets are well suited for a family. Individual ground level entries provide convenient access to each townhome.

The Emerald floorplan features a large master bedroom with a spacious walk-in closet and a private bath. This floorplan is highlighted by a full size washer/dryer provided in a hallway closet for your convenience. The extra-large kitchen includes a pantry, frost-free refrigerator, electric range, garbage disposal, and dishwasher. The kitchen and baths are neutral colors that lend themselves to any decor. Cable hookups are provided. All electric heat and central air conditioning provide comfort for you year round. Schedule a visit to see this beautiful floorplan.

THE EMERALD

3 Bedroom 2 Bath Apartment

1260 Square Feet





512 Golf Ridge
St. Louis, MO 63128

1-866-275-8586

southmoor@michelsonrealty.com

www.southmoorapts.com

Luxury Lifestyle

Enjoy relaxing in our Multi Level Atrium Clubhouse.



Cool off in our Sparkling Pool or just relax lounging on our spacious sundecks.



Our state of the art 24 Hour Fitness Center is the perfect place to keep in shape without the hassle of driving to a gym.

Playtime!

Children love to play on our playgrounds. It's like having a park in your backyard.

Community Amenities

- Multi-Level Atrium Clubhouse
- 24 Hour Fitness Center
- Resident Business Center with Wireless Internet Cafe
- Oversized Pool with Large Sundeck
- Lighted Tennis Courts
- Sports/Activity Courts
- Children's Playgrounds
- 24 Hour Emergency Maintenance Service
- Pet Friendly – Bark Park
- Outdoor BBQ areas
- Media Room
- On-Site Management
- Independent Daycare on Site
- Washer/Dryer available in apartments & 24 Hour Common Laundry Facility



We Love Pets!

Your dog will enjoy running and playing in our fenced in Bark Park.





512 Golf Ridge
St. Louis, MO 63128

1-866-275-8586

southmoor@michelsonrealty.com

www.southmoorapts.com

...Signature Living at
Southmoor Apartments



Office Hours

Monday-Friday: 10am – 6pm

Saturday: 10am – 5pm

Sunday: 12pm – 5pm

Directions

From Lambert Airport:

Take I-70 West to I-270 South. Exit at Tesson Ferry South & go for 2.5 miles. Southmoor Apartments is located on the west side on Southmoor Hills Drive

From Downtown:

Take I-55 South to I-270 North. Exit at Tesson Ferry South & go for 2.5 miles. South Moor Apartments is located on the west side on Southmoor Hills Drive

From Clayton:

Take Hwy-40 West to I-270 South. Exit at Tesson Ferry South & go for 2.5 miles. South Moor Apartments is located on the west side on Southmoor Hills Drive

